



# SPYDER

WWW.SPYDERAUTO.COM

## INSTALLATION GUIDE:

PRO-YD-C305-(ALL COLORS)

### Tools Required

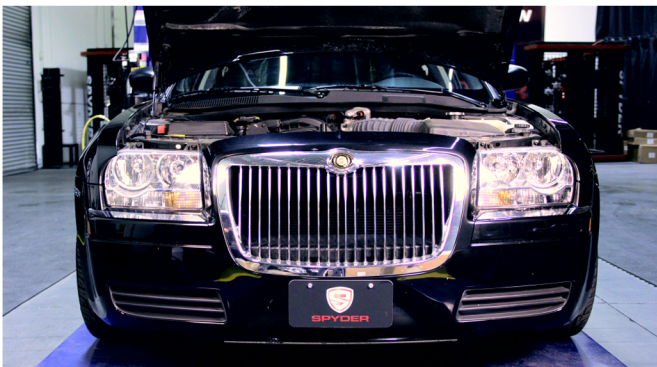
7 & 10mm Socket & Ratchet

Panel Popper

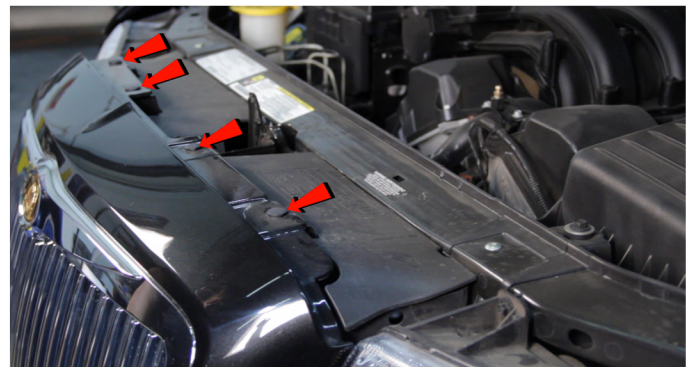
T-30 Torx Driver

*\*Please Note\**

If you are unfamiliar with the installation processes,  
professional installation is highly recommended.



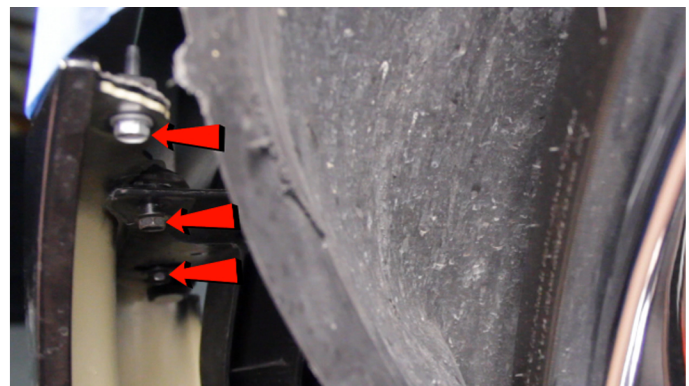
1) Open the hood.



2) Remove [4x] plastic retainers securing the fascia.



3) Remove [4x] plastic retainers securing the fender liner.



4) Remove [3x] 10mm bolts securing the fascia to the fender.

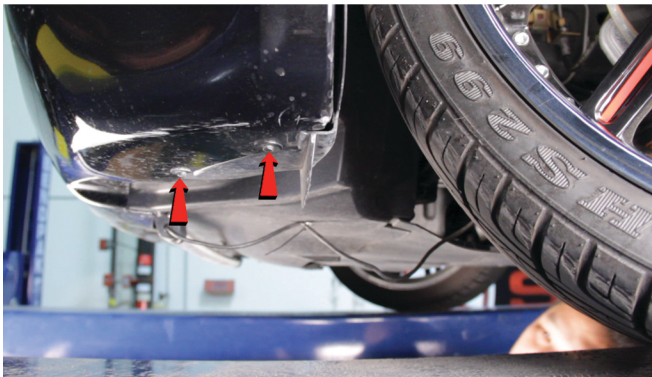




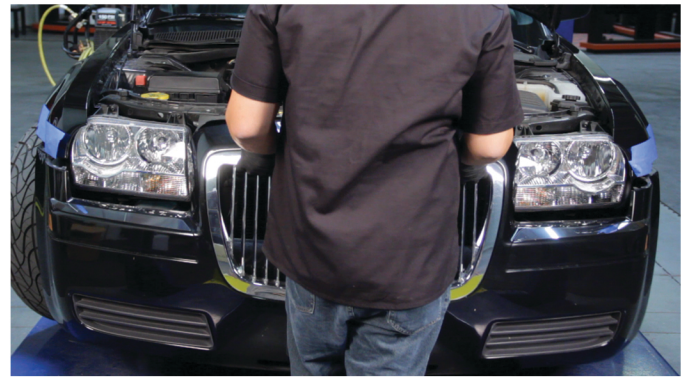
5) Remove [1x] plastic retainer that secures the fascia to the fender.



6) Remove [6x] 7mm bolts securing the fascia to the undertray.



7) Remove [2x] 7mm bolts securing the bottom corner of the fascia on each side.



8) Unseat the front bumper fascia.



9) Disconnect the sidemarker harnesses.

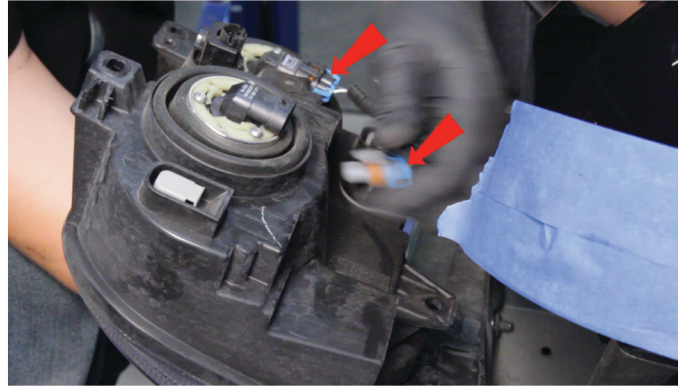


10) Remove [3x] 10mm (T-30) bolts securing the headlight.

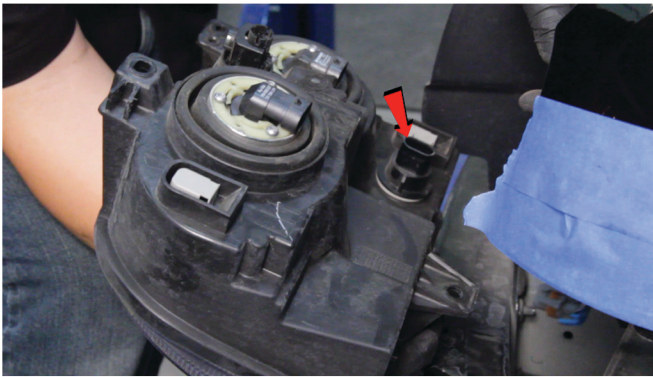




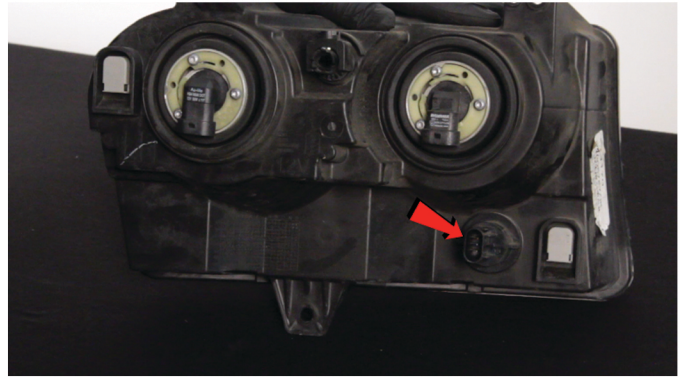
11) Unseat the headlight.



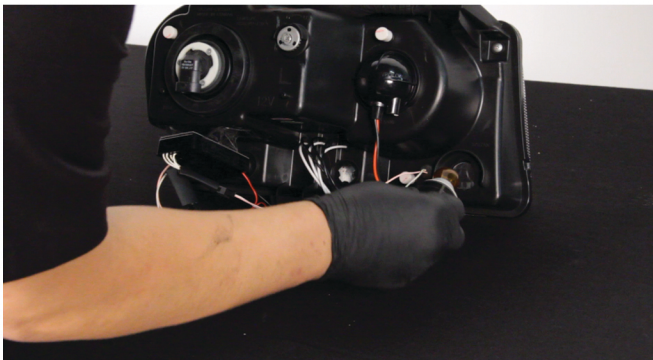
12) Disconnect the high beam and low beam harnesses.



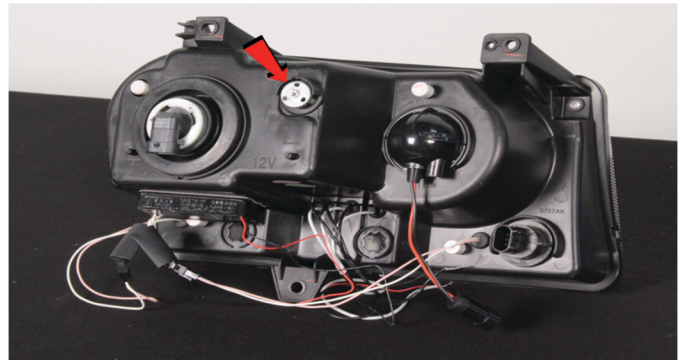
13) Disconnect the turn signal harness.



14) Remove the turn signal socket from the OEM headlight. Never touch exposed bulbs with bare hands.

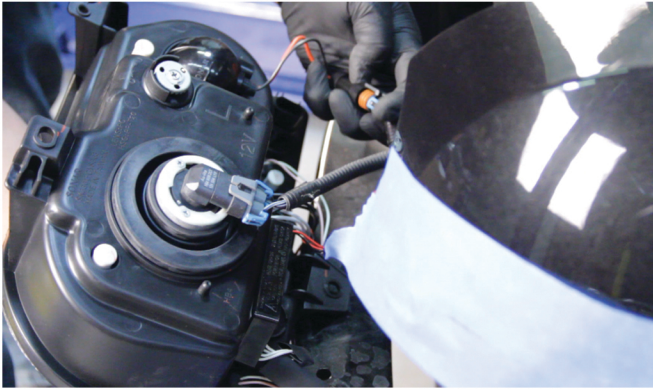


15) Disconnect the high beam and low beam harnesses, then remove the headlight and set it aside. Transfer the turn signal socket to the Spyder headlight.

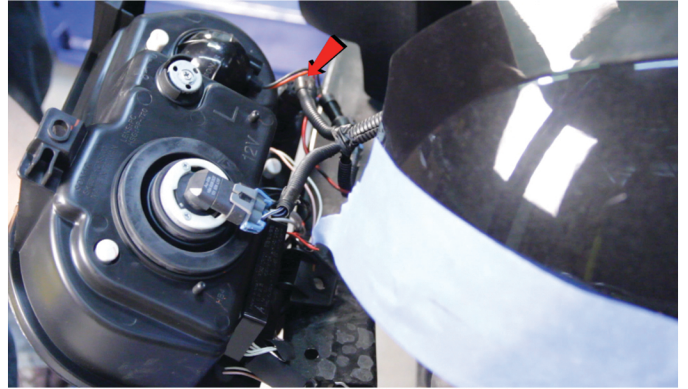


16) The beam adjuster is marked here and is phillips head. For information on how to wire the halos and more, visit the Spyder FAQs playlist on the Spyder Auto YouTube channel.





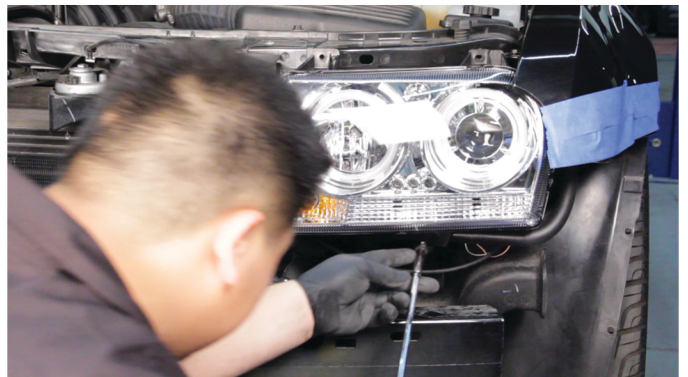
17) Reconnect the low beam and high beam harnesses.



18) Reconnect the turn signal harness.



19) Seat the Spyder headlight.



20) Reinstall [3x] 10mm (T-30) bolts to secure the headlight.



21) Reconnect the sidemarker harnesses.

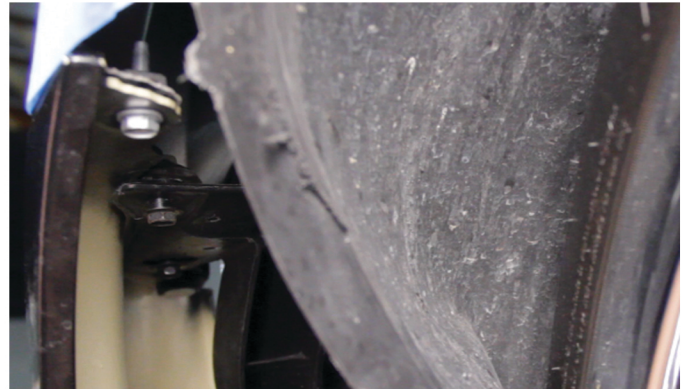


22) Seat the front bumper fascia.





23) Reinstall [1x] plastic retainer to secure the fascia to the fender.



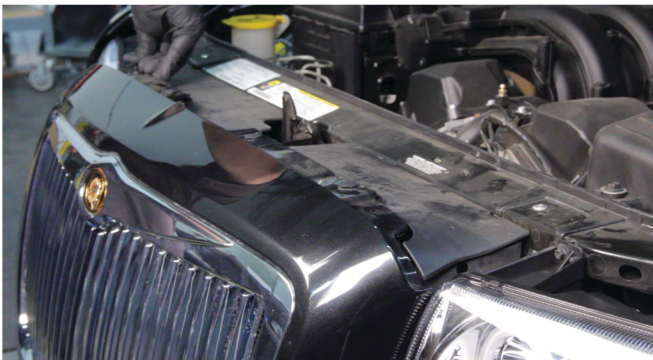
24) Reinstall [3x] 10mm bolts to secure the fascia to the fender.



25) Reinstall [4x] plastic retainers to secure the fender liner to the fascia.



26) Reinstall [6x] plastic 7mm bolts that secure the fascia to the undertray, then reinstall [2x] 7mm bolts that secure the bottom corner of the fascia on each side..



27) Reinstall [4x] plastic retainers to secure the fascia to the header panel.



28) Close the hood and enjoy your new Spyder headlights!





For further help with installation, please watch our installation video. Follow the direct link below to our YouTube channel for more information.

<http://www.youtube.com/watch?v=dBrP1E38OFs>

## Disclaimer

Spyder Auto Installation Guide is not liable for damages, injuries, and death while installing the product. This is a guide only, designed to save you time during the installation process. We take no responsibility and cannot be held liable for improper installation. If you do not know how to install your product or are not comfortable doing it yourself, please seek professional installation.