



SPYDER

WWW.SPYDERAUTO.COM

INSTALLATION GUIDE:

ALT-YD-FM99-(ALL COLORS)

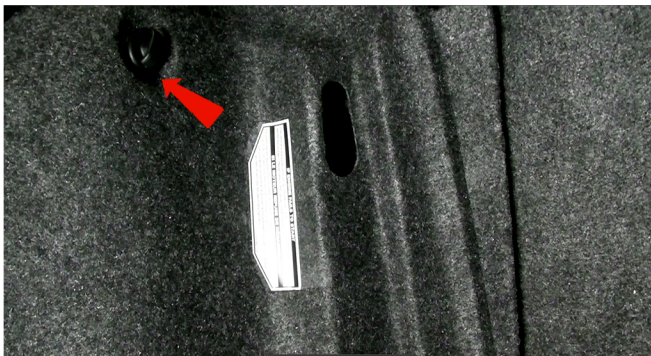
Tools Required

8mm & 10mm Socket wrench/ratchet

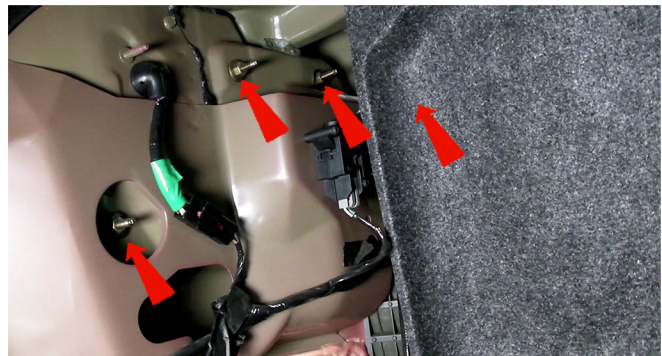


Please Note

If you are unfamiliar with the installation processes, professional installation is highly recommended.



1) Open the trunk. Remove the thumbscrew securing the trunk liner.



2) Peel back the trunkliner. Remove the four 10mm nuts securing the taillight (one is hidden by the trunk liner). Discard the 10mm nuts.



3) Unseat the tail light.



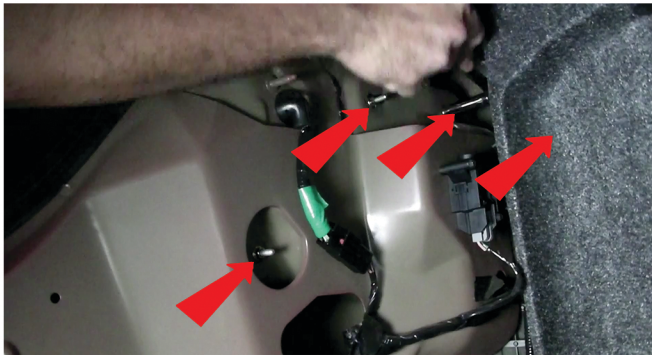
4) Remove the taillight bulbs from the sockets in the OEM tail light. Set aside the OEM tail light. You may wish to thread the 10mm nuts onto the studs of the OEM tail light, should you keep the OEMs.



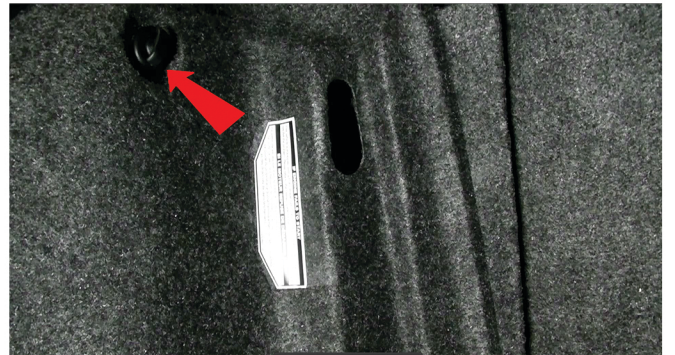
5) Locate the SPYDER LED tail light. Disconnect each of the brake light bulbs and connect each of the three the socket insert harnesses. Line up the black wire side of the socket with the black wire side of the insert. If you do not do this, you can blow fuses and void your warranty. Leave the reverse bulb in place.



6) Seat the SPYDER tail light.



7) Use the four included 8mm nuts to secure the SPYDER tail light to the body.



8) Replace the trunk liner and reinstall the plastic thumbscrew that secures the liner.



9) Enjoy your new SPYDER LED tail lights.



For further help with installation, please watch our installation video. Follow the direct link below to our YouTube channel for more information.
<http://www.youtube.com/watch?v=sRTu4dtWX6M>

Disclaimer

Spyder Auto Installation Guide is not liable for damages, injuries, and death while installing the product. This is intended to be an installation guide, to cut down installation time for you. We have no responsibility for improper installation, if you do not know how to install, please have a professional install it.