

# 2006-13 Impala LED Taillight Installation



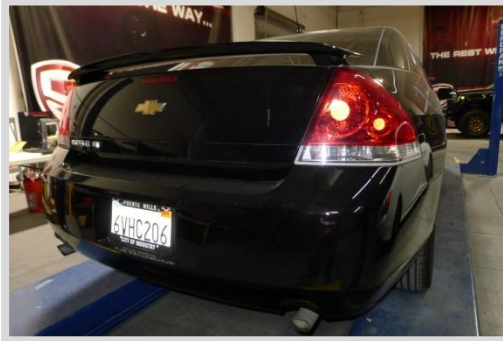
Fits: 2006-2013 Chevy Impala

# Tools required

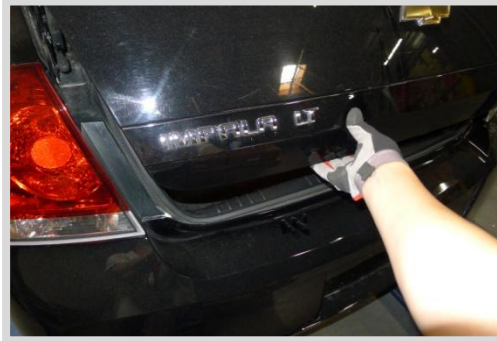
Flathead screwdriver



1. Before



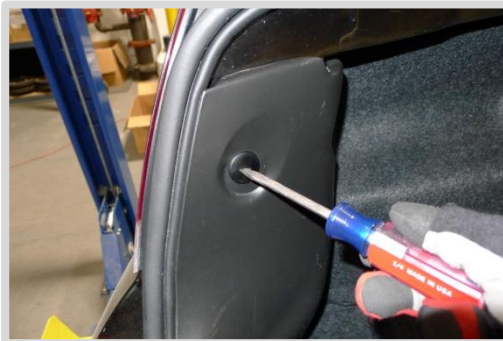
2. Open trunk



3. Plastic retainer location



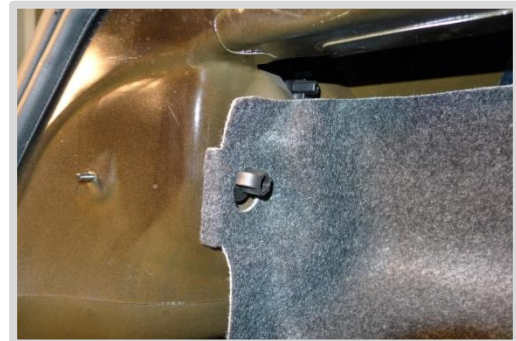
4. Remove 2 plastic retainers



5. Remove plastic trunk moulding



6. Wing nut



7. Remove wing nut



8. Pull trunk liner aside to access 2 more wing nuts



9. Remove 2 wing nuts securing tail light



10. Remove 2 wing nuts securing tail light



11. Remove factory tail light



12. Factory tail light



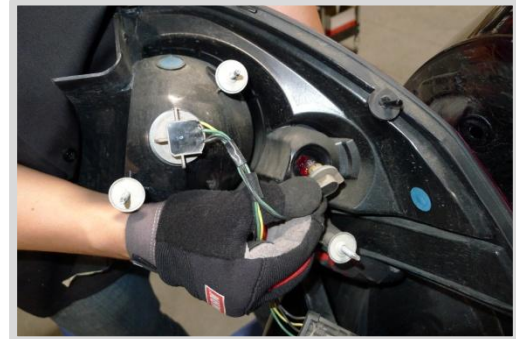
13. Unclip connector from tail light



14. Remove 3 light sockets



15. Remove 3 light sockets



16. Remove 3 light sockets



17. Remove brake light bulb



18. Remove parking light bulb



19. Connect LED connector



20. Make sure black wire on LED connector is lined up to black wire on factory harness



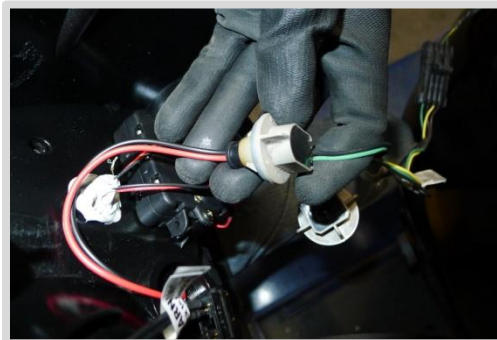
21. Install brake light socket



22. Connect LED connector to parking light socket.



23. Make sure wires are in the correct orientation.



24. Install parking light socket



25. Install reverse light socket



26. Place LED tail light on the car



27. Replace 3 wing nuts and trunk liner



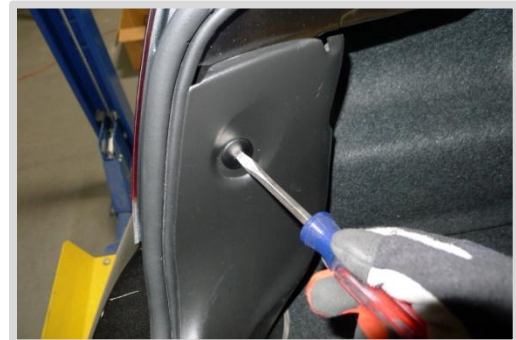
28. Replace 3 wing nuts and trunk liner



29. Plastic moulding



30. Replace plastic retainer



31. Complete

