

2008-14 Audi TT LED Taillight



Tools required

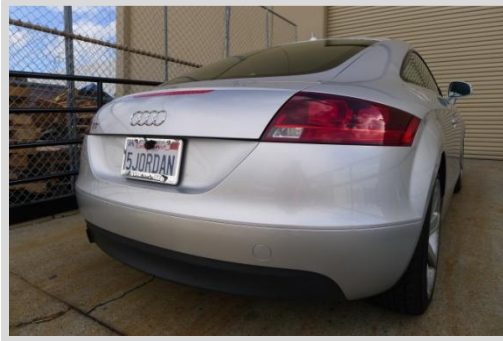
Rag



Flathead screwdriver



1. Before



2. Open trunk



3. Open access hole cover



4. Taillight mounting screw



5. Loosen taillight mounting screw



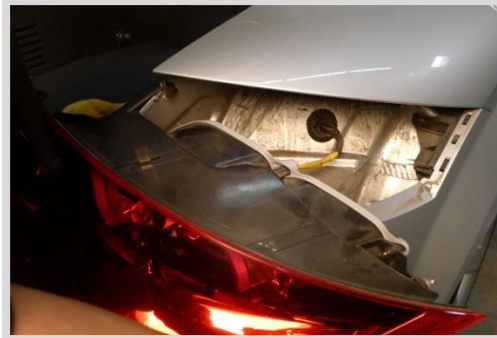
6. Remove mounting screw



7. Gently pry taillight loose



8. Remove factory taillight



9. Disconnect taillight harness



10. Connect taillight harness to LED taillight



11. Place LED taillight into position then press firmly to lock



12. Secure LED taillight with taillight mounting screw



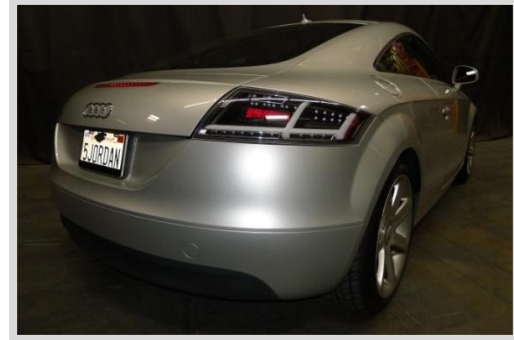
13. Replace access hole cover



14. Close trunk



15. Done



LED turn signals can be configured to illuminate sequentially or simultaneously (standard).

