



SPYDER

WWW.SPYDERAUTO.COM

INSTALLATION GUIDE:

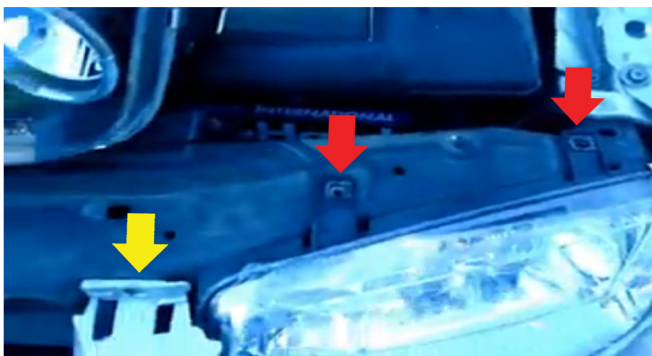
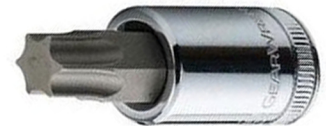
PRO-YD-VJ99 (ALL COLORS)

Tools Required

8mm. T25 and T30 sockets with
Ratchet Driver

Please Note

If you are unfamiliar with the installation processes, professional installation is highly recommended.



1) Begin by opening your hood and locating the (1) Hex bolt and (2) 8mm bolts. These will need to be removed before the head light can be ejected. Using your Torx bit and 8mm socket, remove them from their mount holes.



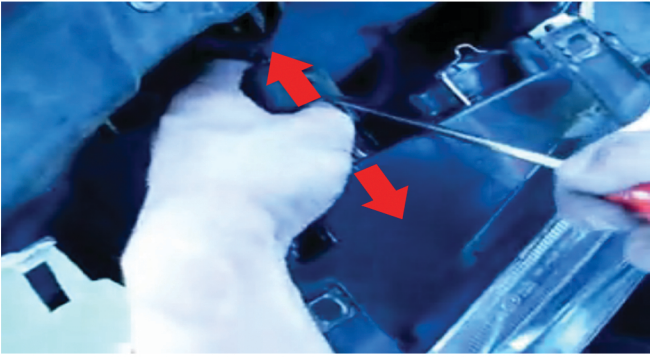
2) Once the bolts have been removed, you will need to remove (1) Hex bolt from the fender well. Using the Torx bit, remove the bolt from its mount hole.



3) Next, you will need to move down to the grill area below the head light, there will be (1) Hex bolt securing the bumper in place. Remove that bolt to release the bumper.



4) Shown here are the locations of (2) more Hex type bolts. You will need to pry the bumper outwards to get to these bolts. Remove the (2) bolts.



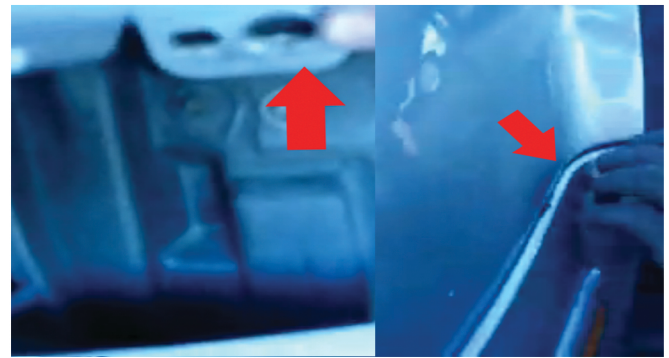
5) In order to remove the headlight you will need to pry off the head light harness clip from the back of the head light. Pinch the clip to release it. Note: using a flat head might help if the clips is stuck.



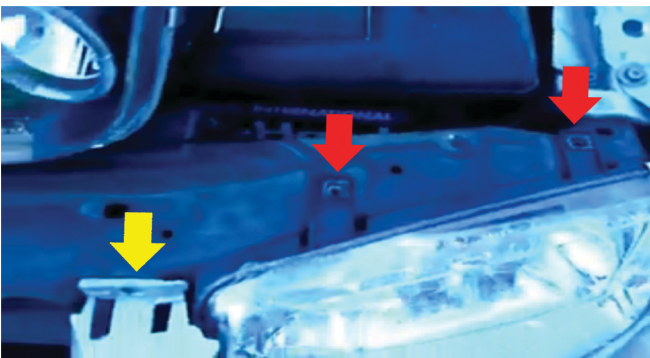
6) Next, connect the new Spyder head light to the OEM harness and seat the head light onto the vehicle, position the mount holes on the head light with the bolt holes on the frame.



7) The next step is to replace the (2) Hex bolts on the bottom of the head light. Using the Torx bit, tighten these bolts back into place.



8) Replace the (1) Hex bolt on the lower grill area securing the bumper to the frame as well as the bumper corner securing it back to the fender.



9) Lastly, replace the (1) Hex bolt and (2) 8mm bolts on top. Using your Torx bit and 8mm socket, tighten them into their mount holes.



Congratulations on completing the installation for your new Spyder head lights for the 1999-2005 Volkswagen Jetta.



For further help with installation, please watch our installation video. Follow the direct link below to our YouTube channel for more information.

<https://www.youtube.com/watch?v=kJsq05TwuM&feature=plcp>

Disclaimer

Spyder Auto Installation Guide is not liable for damages, injuries, and death while installing the product. This is intended to be an installation guide, to cut down installation time for you. We have no responsibility for improper installation, if you do not know how to install, please have a professional install it.