



# SPYDER

WWW.SPYDERAUTO.COM

## INSTALLATION GUIDE:

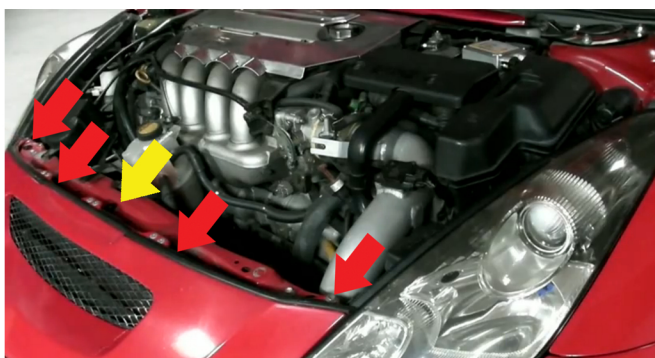
PRO-YD-TCEL00 (ALL COLORS)

### Tools Required

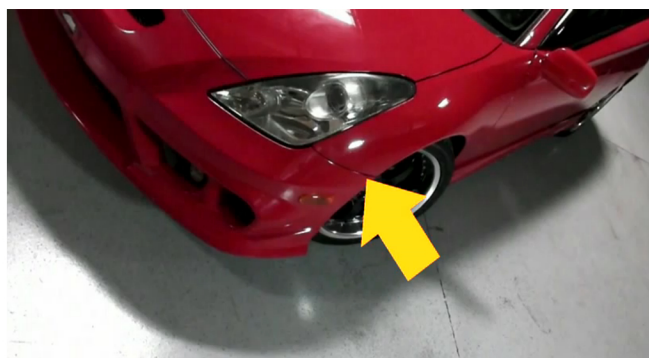
10mm Socket wrench/ratchet  
Panel Popper or Flat-head Driver

*\*Please Note\**

If you are unfamiliar with the installation processes, professional installation is highly recommended.



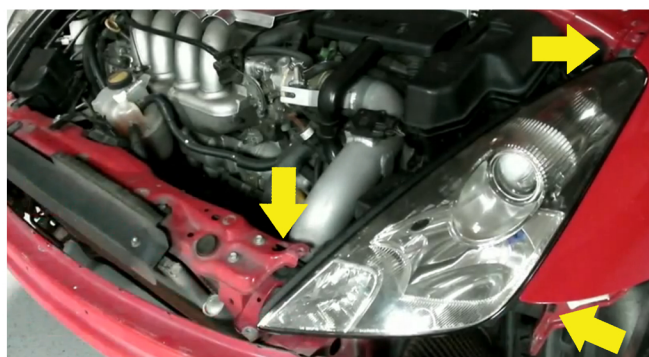
1) Begin by opening your hood and locating the (4) 10mm bolts and (1) plastic fastener that secures the bumper to the frame. Using the 10mm socket remove them from their mounting holes.



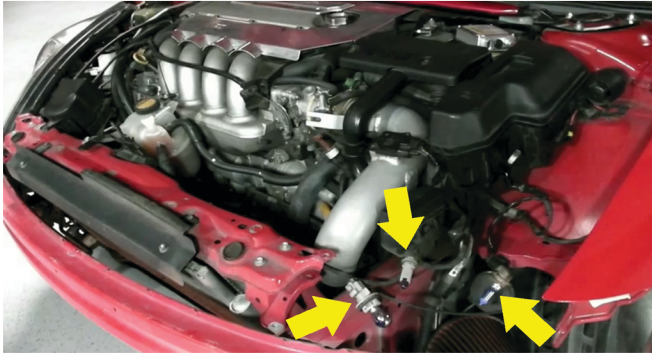
2) Once the bolts have been removed, you will need to move down to the fender liner and remove (1) 10mm bolt on either side of the bumper. Using the 10mm socket, remove them.



3) Next, you need you remove the head light bracket. To do this you will need to remove (3) 10mm bolts, there locations are shown by the arrows.



4) Now it's time to remove the head light. Begin by unbolting the (3) 10mm bolts that secure it down to the frame. Once those are removed, unseat the head light and begin to unhook the head light harnesses.



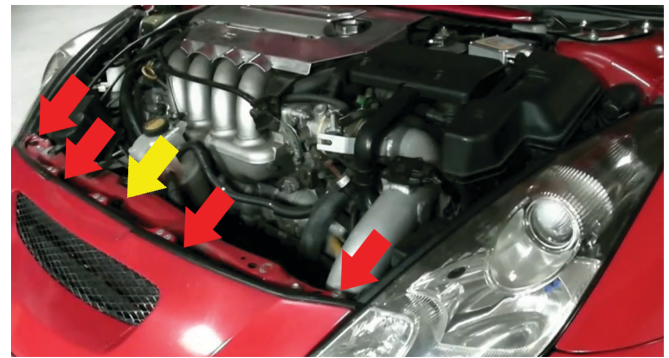
5) Once the head light is removed you will need to install the harnesses removed from your old head lights into your new Spyder head lights. Test your head lights before beginning reinstall process.



6) Next, seat the head light back onto the frame of the car and screw the (3) bolts back into the mounting holes then replace the head light bracket to support the head light. Replace the (3) bolts for the bracket and secure them all down.



7) Now that the head light is secure, replace the front bumper and bolt it down. Begin by replacing the 10mm bolt that secures the bumper to the fender.



8) Replace the (4) 10mm bolts and (1) plastic fastener that secures the bumper to the frame. Be sure these are secured properly



Congratulations on completing the installation for your new Spyder head lights for the 2000-2005 Toyota Celica



For further help with installation, please watch our installation video. Follow the direct link below to our YouTube channel for more information.

<https://www.youtube.com/watch?v=DwBreZHQ0f0&feature=plcp>

## Disclaimer

Spyder Auto Installation Guide is not liable for damages, injuries, and death while installing the product. This is intended to be an installation guide, to cut down installation time for you. We have no responsibility for improper installation, if you do not know how to install, please have a professional install it.