



SPYDER

WWW.SPYDERAUTO.COM

INSTALLATION GUIDE: PRO-YD-DMAG05-(ALL COLORS)

Tools Required

10mm Socket & Ratchet

Panel Popper

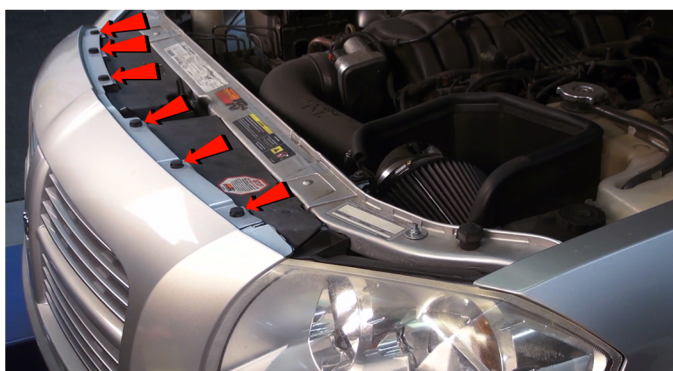
T-30 Torx Driver

Please Note

If you are unfamiliar with the installation processes,
professional installation is highly recommended.



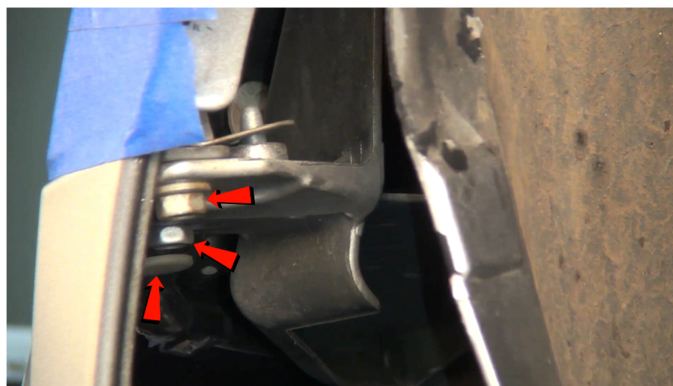
1) Open the hood.



2) Remove [6x] plastic retainers securing the fascia.



3) Remove [3x] plastic retainers securing the fender liner.



4) Remove [2x] 10mm bolts & [1x] plastic retainer securing the fascia to the fender.



5) Unseat the front bumper fascia.



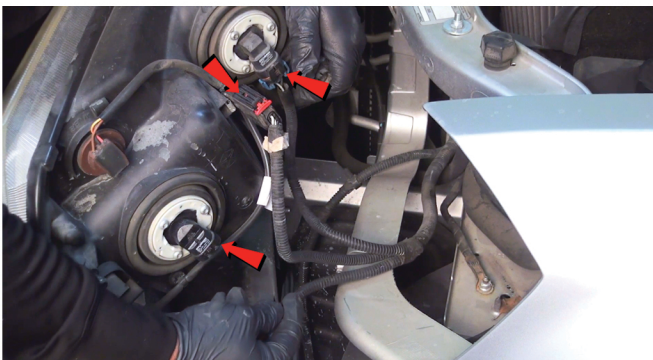
6) Disconnect the fog light wiring harness.



7) Remove [2x] T-30 torx screws securing the headlight.



8) Unseat the headlight.



9) Disconnect the high beam, low beam and turn signal/park lamp harness.



10) Remove the harness connector from the headlight.



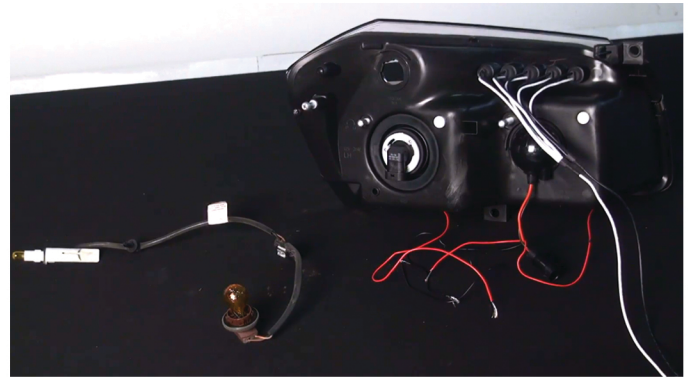
11) Remove the harness connector from the OEM headlight.



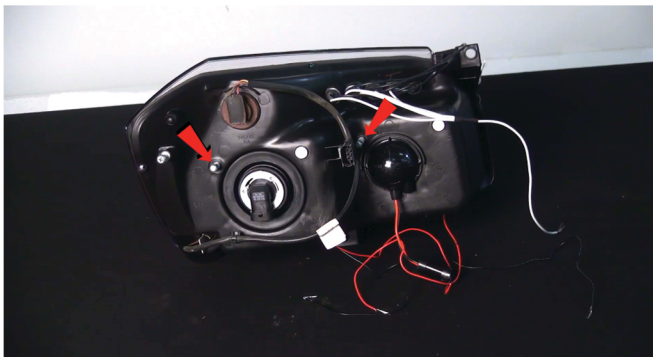
12) Remove turn signal socket from OEM headlight. Never touch exposed bulbs with bare hands.



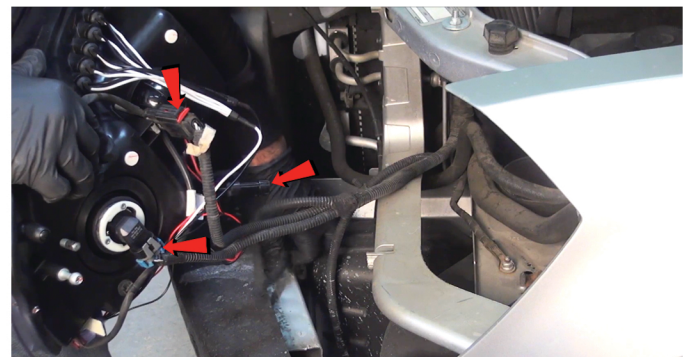
13) Remove the sidemarker socket, then set the harness aside.



14) Reinstall the sidemarker socket and turn signal socket into the Spyder headlight.



15) The headlight beam adjusters are marked here and are 8mm. For information on how to wire the Halos and more, visit the Spyder FAQs playlist on the Spyder Auto YouTube channel.



16) Connect the high beam harness, low beam harness and turn signal/park lamp harness to the Spyder headlight.



17) Seat the Spyder headlight, being sure the retainer tabs snap into place.



18) Reinstall [2x] T-30 torx screws to secure the headlight.



19) Reconnect the fog light harness.



20) Seat the front bumper fascia.



21) Reinstall [6x] plastic retainers to secure the fascia.



22) Reinstall [2x] 10mm bolts & [1x] plastic retainer at the wheel well to secure the fascia.



23) Reinstall [3x] plastic retainers to secure the fender liner.



24) Close the hood and enjoy your new Spyder headlights.



For further help with installation, please watch our installation video. Follow the direct link below to our YouTube channel for more information.

<http://youtu.be/6EWdVJvtkVU>

Disclaimer

Spyder Auto Installation Guide is not liable for damages, injuries, and death while installing the product. This is a guide only, designed to save you time during the installation process. We take no responsibility and cannot be held liable for improper installation. If you do not know how to install your product or are not comfortable doing it yourself, please seek professional installation.